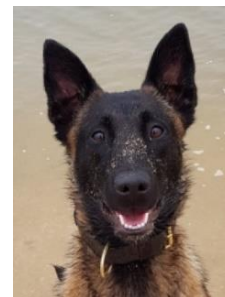


## PD BALOO - LIVING THE RURAL LIFE

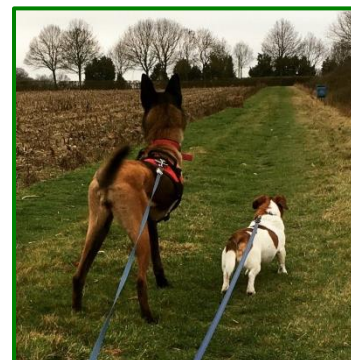


Remember PD Baloo who featured in the ERP Bulletin May edition? She was a great hit with the crowds who attended the Essex Young Farmers Show in May 2018. PD Baloo wowed the onlookers, showcasing her courageous agility and ability to completely take out a fellow colleague on a straight chase! In their own words EPDU stated 'the crowds loved it!' Since her introduction to fame PD Baloo and her handler PC Ross Ashcroft were deployed to a car theft in October. As a number of vehicles attempted to drive away from the scene PD Baloo was unfortunately hit. She was left with a broken pelvis and a badly broken leg which required emergency surgery and was later amputated. Now only at the age of two Baloo has been

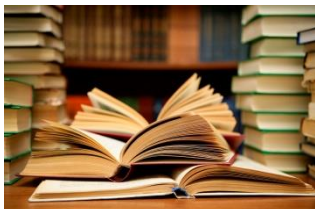


retired from duty, less than a year since she joined the force in March. Unfortunately PC Ashcroft was unable to re-home PD Baloo so the search was on to find this beautiful and amazing dog a new home. Following a huge response Baloo has found her forever home and what a match made in heaven! Baloo now resides happily in rural Essex with her new owners, Mandy is a retired Police Dog Handler and Victoria has a wealth of experience looking after police dogs that have lived with them over the years. Baloo has acres of farmland to explore with her new best pal - Titch, a five year old Jack Russell. Baloo has her own twitter page @PBaloo where you can follow her progress, rehabilitation and all the mischief that she gets up to. Baloo's work is not completely done Mandy will be taking Baloo to fundraising events with Essex Retired Police Dogs Fund - so please go along and meet this exceptional dog. We salute you Baloo!

Not forgetting all the courageous Police Dogs who have served our county please visit the [Essex Retired Police Dog Fund](http://Essex Retired Police Dog Fund) webpage where you will find out more about all the dogs and their stories.



## ESSEX LIBRARY SERVICES CONSULTATION



Essex County Council's consultation on its proposed strategy for library services over the next five years will continue until 20<sup>th</sup> February. The strategy sets out the priorities for library services, in order to shape a service that's modern, focused and fit for the way we live now and in the future.

Find out more and complete the survey online at: [essex.gov.uk/libraries-consultation](http://essex.gov.uk/libraries-consultation)

## STAY SAFE AND WELL THIS WINTER



With colder weather predicted this can pose significant risks, particularly to those who are more vulnerable, Essex County Council (ECC) are encouraging you to be prepared. To access ECC's advice please [click here](#)

## 'LANDMARK' OVERHAUL FOR DOMESTIC ABUSE LAWS



Domestic abuse victims will receive a wide range of new measures to protect them in what ministers say will be landmark legislation.

New laws will for the first time create a legal definition of domestic abuse, to include economic abuse and control. The long-awaited legislation will also ban abusers from cross-examining victims in family courts.

Campaigners say the measures are a "once in a generation" opportunity to combat the impact of abuse. The draft bill going before MPs will also:

- Create new powers to force perpetrators into behaviour-changing rehabilitation programmes
- Make victims automatically eligible for special protections when they are giving evidence in criminal trials
- Set up a national "domestic abuse commissioner" tasked with improving the response and support for victims across public services

### Domestic abuse figures year ending March 2018

Two million people aged 16-59 told the Crime Survey for England and Wales they had been a victim of domestic abuse.

- 1.3m Female victims; 695,000 male
  - 38 Arrests for every 100 recorded crimes
  - 89,091 Cases resulted in prosecution
  - 12% Proportion of prosecutions that fail after a victim changes their mind about giving evidence against their abuser
- Source: Office for National Statistics

The definition of domestic abuse will specifically recognise that it goes beyond crimes of violence and includes victims who are psychologically coerced and manipulated, as well as those who have no control of their finances.

### 'He was still trying to control'

#### "You are the abuser, you are the violent one, who are you to dictate?"

Justice Secretary, David Gauke said abusers will no longer be able to cross-examine their victims in family courts, which he said can cause "immense distress and amount to a CONTINUATION of abuse".

To read the full article please [click here](#)

**Rural Complications:** Isolation can trap a domestic abuse victim anywhere, but in rural areas, social isolation can be compounded by geographical isolation and the perpetrator can be protected by the small size of the community. For many victims in rural areas, their nearest specialist can be up to two bus-rides away from their home. If a partner controls access to a car, denies petrol money, checks mileage, or demands an explanation every time a victim leaves home, that distance can mean a victim is simply unable to get to a specialist support worker. It has been said that emotional abuse is worse than physical violence because it is not as recognised and cannot be seen. Help is out there and awareness is key to assist people free themselves of domestic abuse. Not forgetting the debilitating effect domestic abuse has on children and their mind set.

### Helplines:

**Police:** 999 (always call the Police first if your life is at risk)

**Safer Places:** 03301 025811

**Womens Aid:** 0808 2000 247

**NCDV:** 0800 9702070 - The National Centre for Domestic Violence provides a free, fast emergency injunction service to survivors of domestic violence regardless of their financial circumstances, race, gender or sexual orientation. This can sometimes be issued within 24 hours of making contact with NCDV. NCDV work in close partnership with the police, solicitors and other support agencies (Refuge, Women's Aid etc) to help victims obtain speedy protection.

## HIGHLAND SPRING ROLLS OUT UK'S FIRST 100% RECYCLED WATER BOTTLE



Scottish water brand Highland Spring has confirmed that it will make the UK's first water bottle made with 100% recycled plastic a permanent part of its range, following a successful trial. After launching a 100% post-consumer recycled (PCR) plastic bottle for its 500ml still water lines last summer for a six-month pilot scheme, Highland Spring has confirmed that the innovative packaging will become a permanent part of its offering. Trials of the new packaging at Tesco and Sainsbury's stores across England and Scotland determined that customers were not put off by the bottles' slightly cloudier appearance and were prepared to pay up to 5p more for a 100% PCR bottle. The lightweight bottles, which the company calls "eco bottles", carry labelling informing customers that they are both recycled and recyclable. The only non-recycled components of the bottle are the sleeve and cap, which are both recyclable within UK infrastructure. To read the full article please [click here](#)

## SO WHO IS RIGHT?



Morrison's is introducing a reusable 20p paper bag as part of an eight-week trial in eight of its stores. The supermarket chain will also trial increasing the cost of its reusable plastic carrier bag to 15p, in a bid to reduce the plastic used by customers. Since the plastic bag charge was introduced, supermarket customers' bag use has reduced by more than 85%. Environment Secretary Michael Gove has set up a consultation on raising the cost of plastic bags in England. The Morrison's trial will take place across stores in England, Wales, Scotland and Gibraltar. The supermarket chain said reducing plastic was their customers' top environmental concern. But some retailers have warned paper bags also come with their own environmental challenges. Waitrose said it was not currently introducing a paper bag because "it can take three times more energy to make a paper bag than a plastic one". The production of paper bags uses more energy and creates more CO2 emissions than the manufacture of plastic bags. But paper decomposes much more quickly, while plastic can remain part of the environment for hundreds of years, causing damage to animals and marine life. To read the full BBC news article please [click here](#)

## GROWING COMMUNITIES HEALTHY PACKED LUNCH PLOT COMPETITION HAS YOUR SCHOOL ENTERED?



**First Prize: £500 gardening equipment for your school and a planting day with a gardening expert!**  
**Runners up: £150 gardening equipment for your school**



### Primary school age:

Category one: Reception – Year 3 (4-7 year olds)

Category two: Juniors - Year 4 – 6 (8-11 year olds)

### Special school age:

5 years old up to the age of 16 years

**The first 25 schools to register will receive a free Potato Planter Kit!**

**Kindly sponsored by Perrywood Garden Explorers**

**All entries will receive a free packet of seeds! Kindly sponsored by Kings Seeds**

**For more information please [click here](#)**





## FULL ERP MEETING DATES For 2019

**Date:** Tuesday 2<sup>nd</sup> April

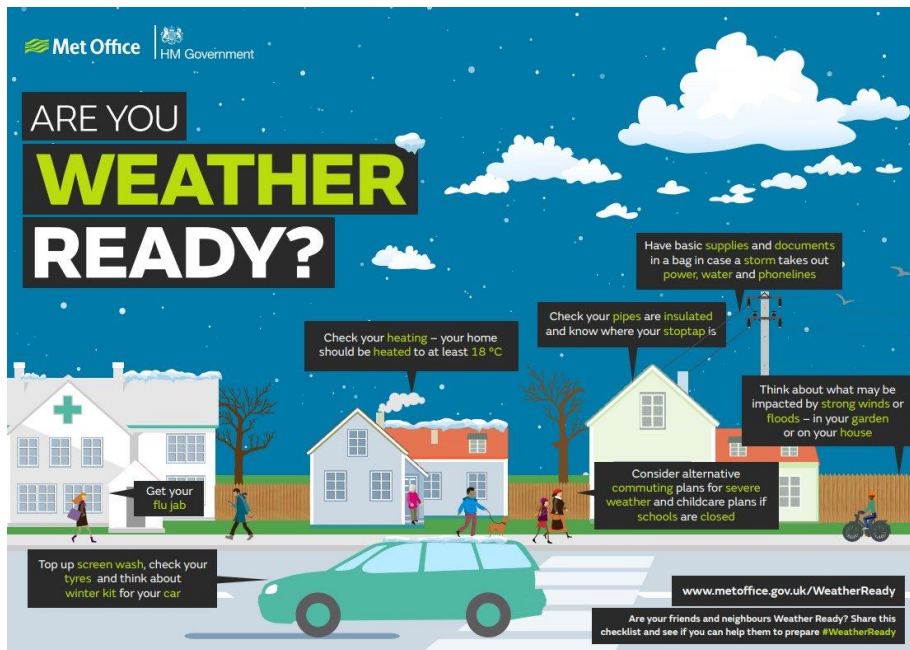
**Time:** Start time 11am – 2pm

**Venue:** Essex Young Farmers Conference Centre, Whitbread's Farm Lane, Chelmsford CM3 3LQ

**Date:** Tuesday 8<sup>th</sup> October

**Time:** Start time 11am – 2pm

**Venue:** Essex Young Farmers Conference Centre, Whitbread's Farm Lane, Chelmsford CM3 3LQ



This newsletter is produced and sent by Rural Community Council of Essex on behalf of the Essex Rural Partnership. If you do not wish to receive this newsletter in future please e-mail [info@essexruralpartnership.org.uk](mailto:info@essexruralpartnership.org.uk) with 'unsubscribe' as the email subject.

Compiled and edited by Lizzie Rose, Rural Community Council of Essex. Rural Community Council of Essex Registered Charity No. 1097009. Company registered in England and Wales No. 4609624