

'VILLAGE HOMES – SOMETHING FOR EVERYONE'

11th April was a memorable day for the village of Wickham Bishops as HRH The Princess Royal, Patron of English Rural Housing Association, joined residents, parish councillors, civic dignitaries and other guests to perform the official opening of Mackmurdo Place, an innovative new housing development for local people.

The Wickham Bishops scheme, developed by English Rural, one of the leading providers of affordable rural housing across the country, was initiated by the Parish Council with support from RCCE and the backing of



Maldon District Council. It takes its name from Arthur Heygate Mackmurdo, well known as an architect and writer in the early part of the 20th century, who lived locally and who in 1929 founded RCCE.



RCCE's Rural Housing Enabler service supported the parish council by facilitating a local housing needs survey to identify the specific need of the community, and with the support of a local landowner, a particularly ambitious 'Village Homes – Something for Everyone' model was

developed. This provides 12 attractive new affordable homes for local people with flats and bungalows available both for rent and affordable home ownership. In turn these are part of a larger development which also includes 15 market homes, marketed at local households.

A feature of the scheme is that it has been delivered without any public subsidy and the affordable homes have been made available at lower than market rent with planning restrictions to ensure that local people with a connection to Wickham Bishops have priority to live in them.

NEIGHBOURHOOD PLANNING GRANTS - LOCALITY



Locality will continue to deliver the Neighbourhood Planning Support Programme over the next four years, from 2018-2022. The programme builds on the 2015-18 programme and any support previously received will be taken into account.

The programme will provide anyone working on a neighbourhood plan with support from the Locality team, AECOM and other partners/specialists through:

- a basic grant of up to £9,000
- additional grants for eligible groups with an extra £8,000
- technical support through expert partners AECOM and other specialists

Under the new programme there will be some important changes to eligibility criteria for support available to groups. In addition, the amount groups are eligible for in grants will depend on what they have received in the 2015-18 programme. Get full details of the changes and what you're eligible for on neighbourhoodplanning.org

The new programme opens for applications on 3 April 2018.

New Neighbourhood Planning programme & changes to My Community – everything you need to know [click here](#)

NEIGHBOURHOOD PLANNING SUPPORT



RCCE can provide support with producing a neighbourhood plan, this can be through; RCCE membership – reduced rates for training sessions and support services (facilitating workshops, attending meetings etc.), online materials and network events, or through some Local authorities – RCCE has secured contracts with several local authorities to provide support to parishes at no charge to them.

RCCE has devised and delivered training on various aspects of neighbourhood plan making including; evidence gathering, introduction to policies and questionnaire design. Assistance can be provided with the process, facilitating workshops or meetings and forums

To find out more about how RCCE can help with your neighbourhood plan please contact the Community Engagement Team at RCCE – 01376 574330

RCCE ESSEX VILLAGE OF THE YEAR COMPETITION 2018 RETURNS!



In villages of all sizes throughout Essex, local people are doing great things to strengthen their communities. The purpose of our competition is to celebrate and reward such efforts. This is an opportunity to tell us about your community and how the people living and working there are involved in community life. It is a simple application process - just one question and thanks to RCCE's sponsors Essex & Suffolk Water and Inkpen Downie Architects there are cash prizes to be won!

The deadline for the submission of entries is Friday 4th May 2018

Essex Village of the Year 2018 - Guidelines and Entry Form please [click here](#)

SPEAK UP ABOUT CRIME IN THE COUNTRYSIDE



Crimestoppers is asking people in Essex to speak up about crime in the countryside. A new campaign against rural crime has been launched in the county where nearly one third of all reported crime is classed as rural - with violence the most common crime.

Crimestoppers is an independent charity which believes everyone has the right to feel safe from crime, wherever they live.

It empowers people to speak up and stop crime 100% anonymously, either by calling the 24-hour hotline 0800 555 111 or using a non-traceable anonymous online form. There's no ID, no police contact, no witness statements, no courts. In Essex, information given to Crimestoppers led to more than 300 people arrested and charged between April and September last year (2017). And the numbers continue to increase.

With a focus on combating crime in the countryside, Chair of Crimestoppers in Essex Stuart Rawlins said:

'Not only does rural crime have a significant effect on the farming community and those who live and work in the countryside, it also impacts on those in towns and cities.

'Our aim is to keep the countryside safer for all of us by getting that message across using social media, leaflets and other tools.'



The campaign will be in three stages. Social media has already been used to target hotspot areas and more will be rolled out during the next few months.

Leaflets and posters will also be distributed to a number of partner organisations, many in smaller communities in the countryside, and village magazines will be asked to help. Serious crimes do take place in rural communities. It's not limited to farm crime. Crimes against property, crimes of violence, domestic violence, child abuse, trafficking and hate crimes all take place in rural communities.

In fact, any crime that affects those living, working or visiting rural areas is considered rural crime.

For more information on Crimestoppers in Essex, visit www.crimestoppers-uk.org/in-your-area-eastern/essex/

WORKING TOGETHER TO HELP BUILD SAFER RURAL COMMUNITIES



Meet Ollie and Les!

Two Essex County Fire and Rescue Service employees who are working together to help build safer rural communities.

Ollie Everott and Les Davis are working in the Braintree and Uttlesford district policing area as Rural Community Builders. Working closely with Essex County Fire and Rescue Service's Community Development Team as well as Essex Police and its officers from the Gypsy, Traveller and Rural Engagement Team, they act on referrals from community

partners to visit people and businesses in rural areas of Braintree and Uttlesford, giving direct advice to those who need it to help them be safe in their homes and businesses.

This is a pilot project and following an evaluation could be rolled out to other parts of Essex in the future.

So far they have visited 26 vulnerable adults – giving advice on fire prevention, checking homes have working smoke alarms, advising on how to make fire escape plans and offering crime prevention advice.

The scheme was officially launched at the Police, Fire and Crime Commissioner for Essex's Rural Crime Forum on Wednesday, April 25th.

Jane Gardner, Deputy Police, Fire and Crime Commissioner for Essex, said: "The safety of those living in Essex's rural communities is of paramount importance to us and this scheme is a fantastic example of police and fire working together to give advice to those in our communities who need it the most to help keep them safe. I'm looking forward to see how this works and develops in the future."

HAVE YOUR SAY, MAKE YOUR VOICE HEARD – THE 2018 NATIONAL RURAL CRIME SURVEY

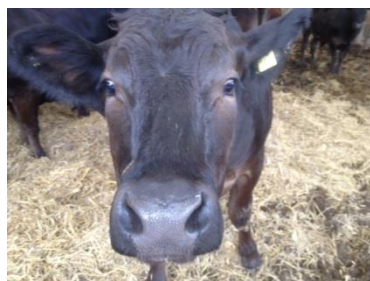


It's three years since the last [National Rural Crime Survey](#) revealed the huge cost of crime to rural communities – both financial, at £800 million per year, and fear, with chronic under-reporting, anger and frustration at the police and government. The National Rural Crime Network produced a series of recommendations and, in many areas, the police took steps to improve matters. So, now, NRCN want to know what's changed. Do you think crime has gone up or down? Do you feel safer? What's your view of the police in your community?

NRCN want to know the true picture of crime and anti-social behaviour in rural communities across England and Wales – and the impact it has where you live or work.

The survey is now available on [this website](#) and is open for submissions until Sunday 10 June.

THE FUTURE FOR FOOD, FARMING AND THE ENVIRONMENT



Department for Environment, Food & Rural Affairs consultation

Defra is inviting views on the government's proposals for future rural policy. The following documents are available online:

Consultation paper – “Health and Harmony: the future for food, farming and the environment in a Green Brexit”

Annex A: Stakeholder proposals

Annex B: Current Countryside Stewardship Options - Mid Tier, Higher Tier and Capital Items

The Future Farming and Evidence Compendium

This consultation closes on 8 May 2018.

<https://www.gov.uk/government/consultations/the-future-for-food-farming-and-the-environment>

SUMMER TIME HAS ARRIVED!



British Summer Time signals the end to dark nights and dreary days with lighter evenings to look forward to over the coming weeks. Spring is well and truly in the air, and there's no better time to get out and about and explore the great British countryside with family and friends... especially the four-legged variety!

Dog walkers are some of the biggest fans of the great outdoors, but there are some things to bear in mind when exploring with man's best friend.

5 TIPS TO ENJOY THE COUNTRYSIDE SAFELY

Did you know that your dog can scare or harm farm animals?

In the unlikely event you are chased by cattle, release your dog so you can both get to safety separately.

Help keep your pet and farm animals healthy by following your vet's advice on worming.

Dog poo can spread disease to farm animals, so it's important to bag it and bin it especially in the countryside.

Any bin will do!

Cows can be nosy, protective of their young and may follow you. It's best to stay calm and walk quickly and quietly around the herd. Re-join the footpath as soon as you can.

BEST KEPT CHURCHYARD COMPETITION - Are you proud of your churchyard and those who work in it?



If so then please consider entering this FREE competition managed by RCCE. The competition looks to recognise and reward Churchyards in Essex that are well-managed, providing a peaceful haven for both humans and animals.

- **Does your churchyard strike a balance between being an area of peace and contemplation whilst allowing nature to flourish?**
- **Do you actively encourage wildlife into your churchyard?**
- **Do you have a team of volunteers who work tirelessly to maintain an attractive and welcoming churchyard?**

Entries may be submitted by any organisation which is responsible for managing a churchyard. All Entries must be received by Wednesday 16th May 2018. Judging will take place in two stages between May and June.

Winners will be announced at the Rural Community Council of Essex (RCCE) AGM in July, where certificates and prizes will be awarded. RCCE encourages entries from Churchyards of all denominations.

To enter please [click here](#)

RCCE ARE LOOKING FOR JUDGES! Fancy visiting rural communities to learn what is being achieved or see how churchyards are providing peaceful haven's for both humans and animals?

Contact Sarah or Sara at RCCE to find out more. Email: sarah.sapsford@essexrcc.org.uk



This newsletter is produced and sent by Rural Community Council of Essex on behalf of the Essex Rural Partnership. If you do not wish to receive this newsletter in future please e-mail info@essexruralpartnership.org.uk with 'unsubscribe' as the email subject.

Compiled and edited by Lizzie Rose, Rural Community Council of Essex. Rural Community Council of Essex Registered Charity No. 1097009. Company registered in England and Wales No. 4609624