

CAMPAIGN TO TACKLE MENACE OF FLY-TIPPING IN ESSEX



Love Essex, alongside a partnership of councils, businesses and the environmental charity Keep Britain Tidy, launched its #CrimeNotToCare campaign to remind residents they could unwittingly end up with a criminal record and face an unlimited fine, if a rogue trader dumps their waste illegally. Cllr Simon Walsh, Essex County Council's Cabinet Member for Environment and Waste, said: "There were 17,547 separate incidents of fly-tipping countywide last year, costing taxpayers' £1,093,907 to clear up – money that could have been better spent on vital services. "Almost 50% of people don't know they're responsible by law if their rubbish is fly-tipped by a third party. We hope #CrimeNotToCare will educate people on how to dispose of their waste correctly to ensure they don't end up with a criminal record and a hefty fine."



A one-tonne fly-tipping haul was temporarily dumped in Central Park, Chelmsford last week to highlight to the passing public how big the epidemic is.

A similar event was also organised in Brentwood High Street.

In Essex there were 17,547 incidents in 2016/17, a 16% increase on 2015/16.

To ensure you don't fall foul of the law, visit www.recyclefor Essex.com/crimenottocare for advice.

To read ECC's full article please [click here](#)

ESSEX COUNTY HARVEST FESTIVAL



The Church of England
in Essex and East London
Diocese of Chelmsford

Chelmsford Cathedral
1st October 2017 11.15am



All are welcome to attend this service, which will celebrate Essex Farming. At this year's Harvest Festival donations of hand-tools are being collected for **Tools With A Mission (TWAM)**.

TWAM produces trade kits for vocational training centres and community workshops around the world. They have a team of volunteers who collect and refurbish tools. The charity distributes the tools to projects that aim to transform lives and communities.

Tools for the following trades will be welcomed on the day:

*Blacksmiths, builders, carpenters, dress-makers, electricians, gardeners,
masons, painters and decorators, plumbers and mechanics.*

For further details please contact Revd Janet Nicholls, Rural Adviser and Agricultural Chaplain

jnicholls@chelmsford.anglican.org

MOBILE LIBRARIES TO FIT PEOPLE'S LIVES



Do you or residents in your area use mobile libraries, or have they in the past?
Are there other ways or venues where library services could be provided in your area?
Essex County Council is consulting residents and organisations about how we can create a mobile library service which is a better fit with people's lives across Essex.

The [consultation](#) runs from 19th September to Monday 6th November.

Councillor Susan Barker, Cabinet Lead for Culture, Communities and Customer says, "We know how much communities value their mobile library services. But we also know that in recent years, fewer and fewer people have been taking advantage of them. We have now reached a point where the right thing to do is look again at how we provide these services. "We want a service which is able to respond to different local needs and settings, a service which is flexible enough to help volunteers set up a community library in a village hall, pub or shop. We want people to get involved, have their say on our ideas and share their own."

For full information please [click here](#) and for the links to the surveys: click here for [adults and organisations](#) and click here for [children and young people](#) Essex County Council is encouraging people to complete the survey online but paper copies are available at all libraries and mobile libraries. For large print, braille or EasyRead versions, or for help completing the survey please call 0345 603 7628. Follow the conversation on Essex Libraries' [Facebook page](#) and [Twitter](#) feed. If any organisation would like to display a poster, available in A4 or A3 or would like to submit additional written comments, please email: libraries@essex.gov.uk

RURAL CRIME UPDATE



Over the last few years as police budgets have been cut, Essex Police has become smarter in its approach to tackling crime. Gone are the days of having a bobby in every village and we now rely more and more on intelligence and the public's help to tackle crime. As part of my role I attend a number of 'watch' meetings, such as Farmwatch and I am often told about incidents that occurred that were never reported to the police or

suspicious activity that was ignored, as they didn't want to 'waste the police officers time'.

We know there have been issues using the 101 system at peak times, we do ask people to use alternatives like the Essex Police Website to report incidents online or the various smartphone apps that report into Essex Police.

No report of crime or suspicious incident is wasting the police time. We need to know about every incident. Only then can we build up an accurate picture of what crime is occurring, to target our resources more effectively.

The smallest snippet of information could add to a bigger story and be the key to arresting someone.

So if you see it, report it!



If you wish to discuss this or any other Rural crime concerns please feel free to contact me on 101 ext 435003 or by email Andrew.long@essex.pnn.police.uk or on Twitter @PcAndyLong.
If you want to report crime dial 101 or in an emergency 999.

WATCH THIS SPACE - GROWING COMMUNITIES HEALTHY PACKED LUNCH PLOT COMPETITION IS RETURNING!



Following the tremendous success earlier this year RCCE is launching the competition again. It is open to school children of Essex, age range from Reception to Year 6. Please help spread the word!

This year it could be your school benefitting from fantastic prizes and the chance to plant their design!



**2017 School winners
Danbury Park Community School**



**2017 Special school winners
Thriftwood School**



Further details will be available on the RCCE website and twitter as soon as they are available

FARMING AND THE ENVIRONMENT



British farmers are passionate about providing a huge variety of quality British food for us all to enjoy. But farming is about much more than growing great food. As well as adding a staggering £108 billion to our economy and employing 3.9 million people, farmers take their role as countryside managers seriously - one of the reasons why 80% of England's landscape character is now in stable or improving condition. It's an important message, but one which is sometimes lost.....

To view the NFU's full article click here [For example, did you know?..](#)

STOW MARIES WW1 AERODROME ON COURSE FOR RESTORATION



Buildings at Stow Maries Great War Aerodrome, near Maldon will be developed to expand the visitor attraction. The aerodrome was established in 1916 and played a key role in defending London from German Zeppelin attacks.

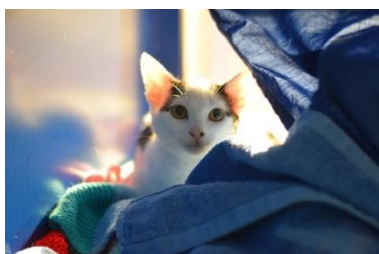
Ros Kerslake, of the Heritage Lottery Fund, said:

"The fact the aerodrome was largely forgotten for so many decades adds to its mystique and appeal."

The airfield reverted to agricultural use after the war, but most of the buildings remain untouched. The site was in a state of disrepair until a group of local historians and military aviation enthusiasts recognised its importance in the late 1970s. In 2013 Stow Maries Aerodrome Ltd (a company with charitable status) completed the purchase of the site to ensure its long-term preservation.

To read the BBC News full report please [click here](#)

WORKING CATS LOOKING FOR RURAL HOMES



Battersea Dogs & Cats Home is appealing to landowners, farmers, stables, garden centres, and rural homes with outbuildings to come forward to help provide a safe home for cats that wouldn't be able to cope in a traditional pet home. Hundreds of cats that are not well socialised to people come through the charity's gates every year. The cats are so used to fending for themselves they're not well suited to being a traditional pet.

The charity are seeking rural homes, including farms and stables, who could provide an ideal alternative for these cats providing them with the space they need to roam, hunt, and exhibit their natural behaviour.

If this appeals to cat loving rural based homes then please [click here](#) for further information and help provide an animal with a deserving safe home. Please note these are working cats who will need and enjoy their own territory with shelter and a food source without the stressful confines of sharing a home with people.

LOOKING TO PLANT A LARGE NUMBER OF TREES ON YOUR FARM OR PRIVATE LAND? THEN THE WOODLAND TRUST CAN HELP



Make a difference and plant trees on your land. The Woodland Trust is on hand to help, encouraging new hedgerows and infills.

What the Woodland trust are offering:

- tailored advice
- grants and funding
- trees and protection

FACT: Hedges shelter livestock, prevent soil erosion and attract pollinators.

For more information and to apply please [click here](#)

VOTE FOR TREE OF THE YEAR



The Gilwell Oak in Epping is one of ten trees shortlisted for the Tree of the Year. The competition, run by the Woodland Trust, is inviting people to vote for their favourite tree before 8th October – [you can vote here](#) for the Essex tree (or for another of your choice).

The Gilwell Oak sits at the heart of Gilwell Park in Epping, the home of the scouting movement conceived by Robert Baden Powell. The towering oak was adopted by Powell as a neat analogy in 1929 for not only the growth of the scouting movement worldwide, which began with a small trial camp some 21 years earlier, but as a message to young scouts that big things are possible from modest starts. It has a chequered past, with less wholesome and well-intentioned adventurers once mingling amongst the oaks at Gilwell, including notorious highwayman Dick Turpin and his gang.

FULL ERP FUTURE MEETING DATES 2017

Date: Tuesday 24th October

Time: 2pm – 5pm

Location: Essex Young Farmers Conference Centre, Whitbread's Farm Lane, Chelmsford CM3 3LQ



This newsletter is produced and sent by Rural Community Council of Essex on behalf of the Essex Rural Partnership. If you do not wish to receive this newsletter in future please e-mail info@essexruralpartnership.org.uk with 'unsubscribe' as the email subject.

Compiled and edited by Lizzie Rose, Rural Community Council of Essex. Rural Community Council of Essex Registered Charity No. 1097009. Company registered in England and Wales No. 4609624