

## CRIME NOT TO CARE – JOIN THE THUNDERCLAP



Fly-tipping in Essex cost more than £1 million of taxpayers' money to clean up in the past year. 47% of people don't know they're responsible by law if their waste is fly-tipped by a third party. **#CrimeNotToCare** aims to educate people about how to dispose of their rubbish correctly to ensure they don't unwittingly end up with a criminal record. By 2020 Keep Britain Tidy aims to reduce fly-tipping by 50%, but we need your help to spread the word and make sure residents really do Love Essex.

## FLOOD EXPO – FREE TICKETS FOR ERP MEMBERS



### FLOOD EXPO

27<sup>TH</sup> and 28<sup>TH</sup> September, London

Essex Rural Partnership has been offered some free tickets for this event. If you are interested in attending please contact Suzanne at [suzanne.harris@essexrcc.org.uk](mailto:suzanne.harris@essexrcc.org.uk), who can order them for you. The event includes exhibitors, speakers, demonstrations, debates and networking.

## FUNDING INFORMATION EVENT – EAFRD and LEADER funding



SOUTH EAST  
LOCAL ENTERPRISE  
PARTNERSHIP

Tuesday 3<sup>rd</sup> October, 1.30pm – 4.30pm

The South East LEP are hosting a joint EAFRD and LEADER grant programme event at Whitbread's Barn, Chelmsford offering an overview of the priority calls currently open.

There will be the opportunity to hear about the requirements and application process for EAFRD and LEADER funding, as well as information on frequently asked questions and where to find support.

**Attendance is free but you must book a place** – if you would like to attend the event please [click here](#) to book.

At the end of the meeting there is the opportunity to network and book a 1-2-1 with RPA and LEADER staff. If you would like to book a 1-2-1 please email [lep@essex.gov.uk](mailto:lep@essex.gov.uk). A 1-2-1 will last for 5 – 10 minutes.

## HAVE YOUR SAY ... Superfast Essex Public Consultation is still OPEN



Superfast Essex is holding a public consultation to reassess the availability of superfast broadband across Essex, it is open until midnight 31 August. Click this [link](#) to access the consultation and further information.

## BRAKE URGES RURAL ROAD PRACTICE FOR YOUNG DRIVERS



BBC News published a call from the charity Brake for a new licensing system that would include a minimum driving period and restrictions for new drivers, along with the rural training. Brake stated in 2015, 120 young drivers died on UK roads, with 80% of crashes taking place in rural locations.

"High speeds, sharp bends, narrow lanes, risky overtaking and the presence of vulnerable road users like cyclists, make rural roads the most dangerous by far," said Jason Wakeford from Brake.

BBC News article 24<sup>th</sup> August 2017 please [click here](#)

## RURAL CRIME UPDATE



Last month we discussed a national problem of Hare Coursing, a criminal offence where dogs are used to pursue Hares across farmland. Another issue that raises its head more often when the crops have been harvested is 'Nighthawking'. A weird name that has not been heard before by everyone, but refers to unlawfully entering land in order to use a metal detector. Metal detecting itself is not unlawful and is a huge hobby in the UK and all over the world. There are national bodies representing detectorists and the 'Portable Antiques Scheme' has been set up to record finds and deal with all cases of Treasure on behalf of the Coroner. Yes it is strange that the Coroners court also hears cases about treasure finds! By law, Treasure is anything over 300 years old and containing more than 10% silver or Gold. Regarding coins, it must be 2 or more silver or gold coins found together or 10 coins of any other metal, but again need to be over 300 years old. The law also covers valuables, under 300 years old, hidden to be recovered later, which used to be called 'Treasure Trove'. Illegal metal detecting is done both at night and during the day, which makes the term Nighthawking even more misleading. They are not interested in the historical nature of the finds and are more concerned with what the monetary worth of the finds are. Basically they are stealing! Everything in, on and under the land belongs to someone. It may be the landowner, or in the cases of treasure, the Crown. All historical context and information about the find spot is lost when the item is stolen and never declared. There is a growing market for stolen antiquities and Essex Police coordinate the operation to tackle these problems, called Operation Chronos. We work with the British Museum, Historic England, English Heritage and many others to try to stop this activity and bring the offenders to justice.

I always advise landowners that if anyone asks for permission to detect on their land, to ensure they are a member of a national body, such as the National Council for Metal Detecting (they will have a membership card) and that you both sign a written agreement.

If you think this unlawful activity is occurring you can report it to the police via 101. A metal detectorist obeying the law, and with permission of the landowner, would be happy to talk about his or her hobby to anyone that will listen, including a Police Officer! If you want any more information on Metal Detecting or Operation Chronos please feel free to contact me on 07890513899 or by email [chronos@essex.pnn.police.uk](mailto:chronos@essex.pnn.police.uk).

If you wish to discuss this or any other Rural crime concerns please feel free to contact me on 101 ext 435003 or by email [Andrew.long@essex.pnn.police.uk](mailto:Andrew.long@essex.pnn.police.uk) or on Twitter @PcAndyLong.

If you want to report crime dial 101 or in an emergency 999.

## ESSEX POLICE - UNAUTHORISED ENCAMPMENTS



Essex Police, Local Authorities, the Police and Crime Commissioner and the Essex Countywide Traveller Unit have all agreed a partnership approach to the management of unauthorised encampments. This is set out in the attached flow chart. It gives the public and land owners a clear understanding of the process followed when an encampment is reported.

All too often there is an unrealistic expectation of Essex Police where unauthorised encampments are concerned and hopefully the agreed protocol will put this right. It must be understood that the act of trespass is not a criminal offence. It is a civil tort and the responsibility for the eviction of the trespassers rests with the land owner.

Police do have powers to remove trespassers under section 61 (S61) of the Criminal Justice and Public Order Act but there is also national guidance for police officers on when those powers should be used. The Gypsy and Traveller community are recognised as a minority group and part of their culture is to travel, stopping for a short period at one place before moving to another. At this time there is no provision for this way of life within the county of Essex. We do not have any transit or temporary stopping sites and as a result we get unauthorised encampments. The PCC has addressed this with Essex County Council and work is under way to identify suitable locations.

In most cases S61 is made out, for example there may be six or more vehicles or they may have damaged a lock to gain entry to the land. Essex Police will investigate all reports of crime but in most cases of this kind there are no witnesses to the damage and no likelihood of identifying the person(s) who committed the offence.

Police will attend all unauthorised encampments and work with the land owner during the eviction process. We will step in and evict the trespassers when it is lawful, necessary and proportionate to do so. There must be some significant impact upon the:

- Local community (for example- preventing the use of park and recreational spaces etc but this must be shown to be the case),
- Environment (fly tipping – placing household waste in bin bags for collection will not count) or
- Economy (parking in a business car park causing a loss of business for example) or
- Danger to life or
- The occupants of the encampment behaved in a way that was or would have been subject to S61 at their previous location and it is believed by police that they will continue to behave in an anti-social way at this location.

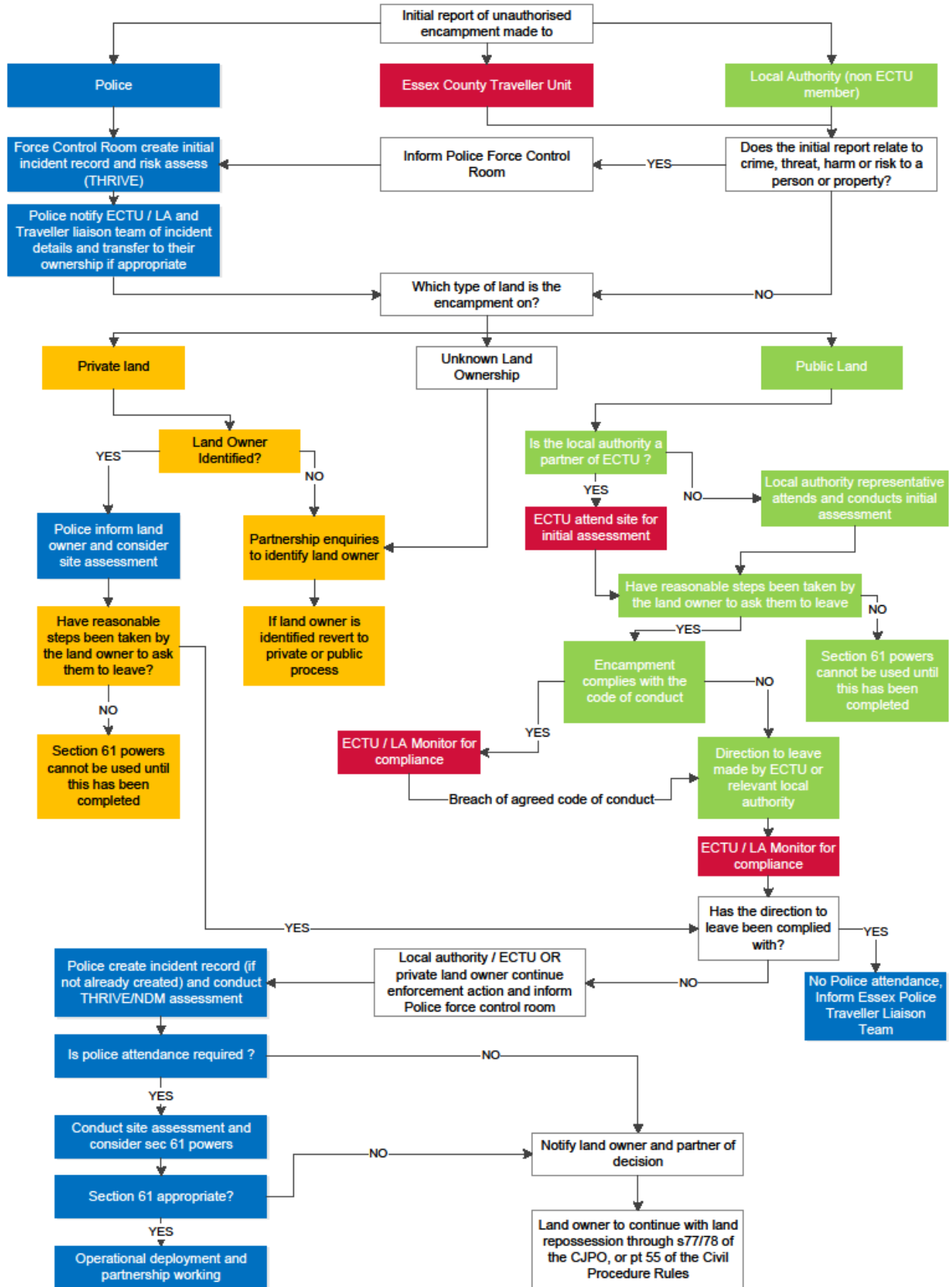
The mere presence of an encampment alone should not generate an expectation that police will evict the trespassers.

Essex Police are committed to working with and protecting all of our communities from harm. To do so we need the support of the public in the reporting of crime.

*Sergeant Paul Downes – Gypsy and Traveller Liaison Officer*

# Partnership Approach to Unauthorised Encampments

This flowchart provides partners within Essex a process to follow in the event of an unauthorised encampment being identified.



## WHO'D BE A FARMER TODAY?



A new report launched by the The Prince's Countryside Fund delves into the true perception towards farming and the countryside from the public and farmer point of view. The resulting research proves an interesting read and all is not rosy on our nations farms. Bearing in mind farmers do so much more than farm, they also play a key role in managing our countryside. This is an important job that ensures our wildlife, pathways, rivers and forests are maintained for all to enjoy.

To read The Prince's Countryside Fund report please [click here](#)

## CHELMSFORD RECYCLING OPEN DAY



**Saturday 9th September 2017 - 10:00 AM - 2:00 PM**

Find out about your waste and recycling in Chelmsford. Recycling officers will also be on hand to answer any of your recycling questions.

At the open day, you will be able to:

- Take a tour of the recycling facilities
- Find out what happens to your recycling once it's been collected
- View and sit inside the collection vehicles
- Enter a quiz with a chance to win a hamper

Please refer to the Recycle for Essex website for further details: please [click here](#)



This newsletter is produced and sent by Rural Community Council of Essex on behalf of the Essex Rural Partnership. If you do not wish to receive this newsletter in future please e-mail [info@essexruralpartnership.org.uk](mailto:info@essexruralpartnership.org.uk) with 'unsubscribe' as the email subject.

Compiled and edited by Lizzie Rose, Rural Community Council of Essex. Rural Community Council of Essex Registered Charity No. 1097009. Company registered in England and Wales No. 4609624