

Bringing the

BIG OUTDOORS

closer to everyone

GREEN ARC

Bringing the **BIG OUTDOORS** closer to everyone

**Presented by
Jim Smith
Operations Manager**

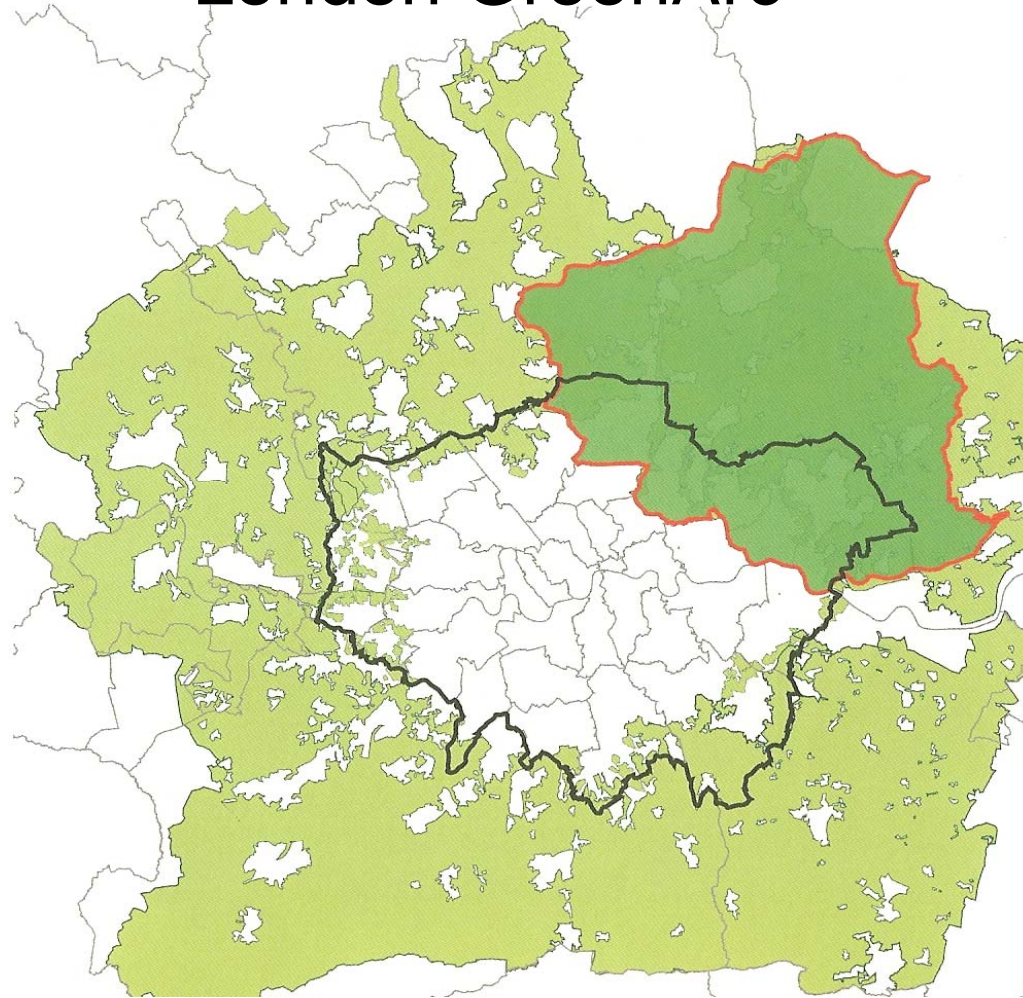
GREEN ARC
Bringing the **BIG OUTDOORS** closer to everyone

What is GreenArc?

A multi agency, cross regional, cross county strategic landscape initiative which aims:

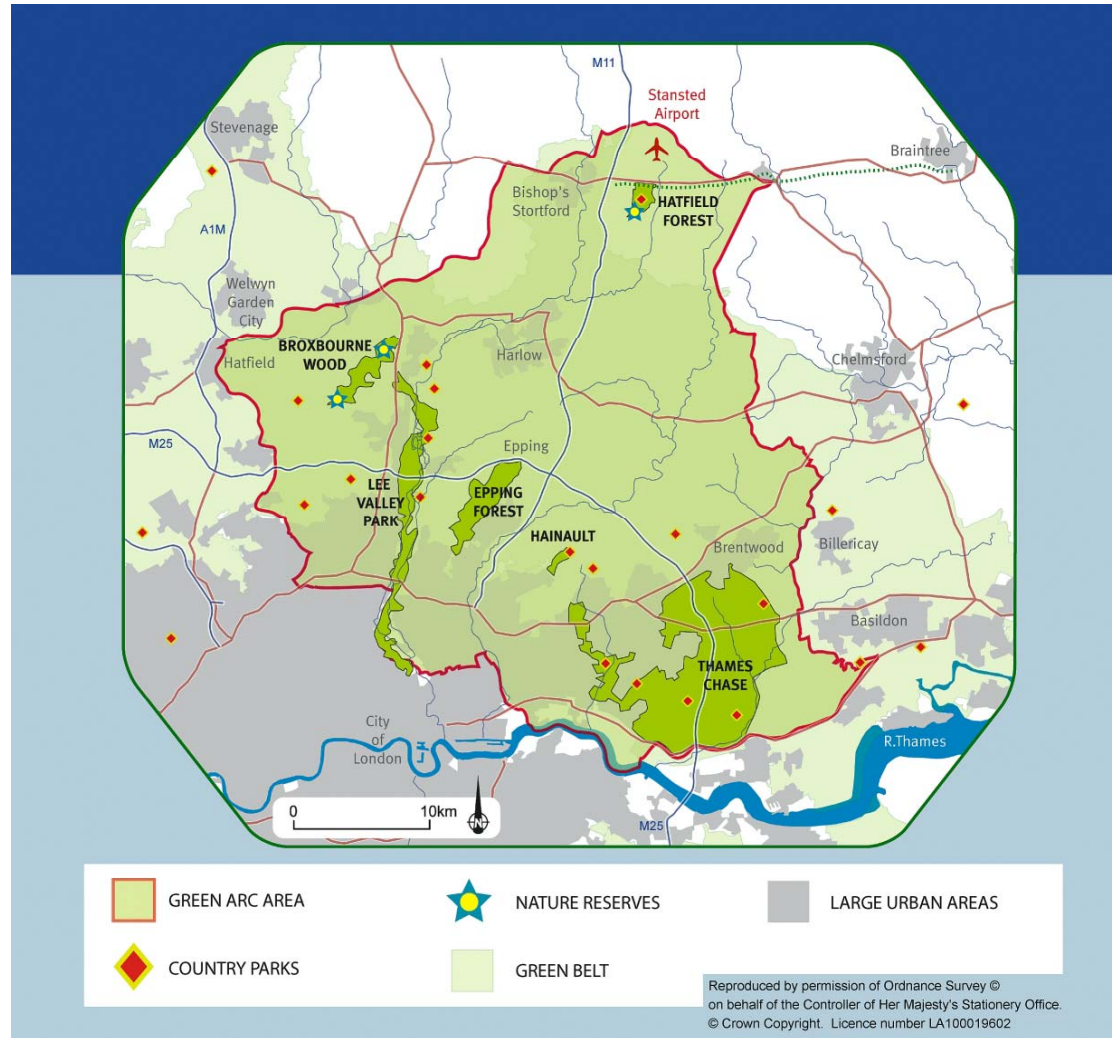
- to enhance, protect and conserve the green belt for public use,
- to increase and expand Green Infrastructure to growth area populations,
- to protect and conserve biodiversity and wildlife

London GreenArc



Bringing the
BIG OUTDOORS
closer to everyone

NE GreenArc



Contributing Partners

Essex County Council (Host organisation)

Natural England

The Forestry Commission

The City of London

The Greater London Authority

Lee Valley Regional Park

Department for Communities and Local
Government (DCLG)

Delivery Partners

The Woodland Trust
Essex Wildlife Trust
The City of London
Lee Valley Regional Park Authority
The National Trust
BTCV
The Environment Agency
The Land Restoration Trust
British Waterways
Herts Wildlife Trust
Groundwork Trust
FWAG

Staff January 2007

Mary Parodi – Director

Jim Smith – Operations Manager

Debbie Hadley - Administrator

GreenArc Vision

Agreed by steering group members 16th
October 2003

“Bringing the BIG OUTDOORS closer to people – through the creation and protection of an extensive, attractive and valued landscape of well connected and accessible countryside around London, for people and wildlife”

Site Management

Two key management
criteria for GreenArc:

- Managing to benefit people
- Managing to benefit wildlife

Concept

What does this Involve?

- Total GreenArc area around 136,000 ha
- Reasonable expectation of 5 -10% area increase to achieve the Vision and Strategic Objectives
- A 40 year delivery plan

Benefit People & Wildlife

- Traditional Farmland Landscapes
 - remove the emphasis on intensive farming
 - permanent pasture
 - hedgerows and traditional farm woodlands
 - increased focus on connectivity of habitats within landscape



Site Management

- GreenArc established through three key mechanisms
 - public & voluntary sector purchases
 - land management agreements with landowners
 - Section 106 agreements & planning authorities
- Two key management styles
 - low input farm landscapes
 - minimum input naturalistic landscapes
- Location as one of the determining factors

Benefit People & Wildlife

- Extensive naturalistic landscapes
 - large areas of relatively low management input
 - focus on natural processes & cycles
 - wooded and open landscapes
 - low intensity grazing may be a feature



People & Wildlife Balance

- Through Zonation
Recreational facilities
such as:

visitor/interpretation
centres
car parks & signs
interpretation boards
all ability trails



People & Wildlife Balance

- People engagement programmes

events

public liaison

consultations

educational

programmes



What has been achieved?

£2.3 million from the DCLG for:

- Woodland Trust site purchase at Theydon Bois
- Contribution towards purchase of Amwell Quarry Nature Reserve by Herts WT
- LVRPA Habitat Works at Sewardstone Marshes and extension of Sustrans Cycle Network
- Project Management costs for 2 years

Theydon Bois



Picture courtesy of Woodland Trust

What Next?

- Further delivery of capital and revenue projects in defined target areas from Biodiversity Audit
- Delivery of GreenArc Horsewise project by FWAG
- Closer consultation and liaison with landowners and agents
- Further development with community groups and the general public
- New guidance for section 106 agreements for contributions to the GreenArc

How can you help?

- Understand the benefits of this strategic landscape project
- Inform colleagues of the GreenArc and seek support
- Cascade GreenArc principles and objectives within the new planning process

Any Questions ?

Contact Details

Jim Smith - Operations Manager

GreenArc

United Business Centres,
3rd Floor Endeavour House

Coopers End Road,

Stansted Essex CM24 1SJ

Mobile : 07920467160

Office : 01279 - 669452

Email : jim.smith@essexcc.gov.uk

Website: www.greenarc.org